

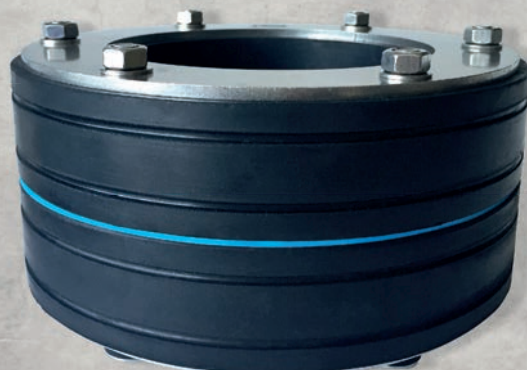
PSI COMPAKT WR SUPER SOFT SEAL

GAS AND PRESSING WATER TIGHT UP TO 5 BAR

DOUBLE RUBBER SEALING RINGS MADE OF EXTRA SOFT EPDM

RELIABLE SEALING EVEN FOR THIN-WALLED PIPE TYPES

FHRK
QUALITY



WWW.PSI-PRODUCTS.COM

GENERAL INFORMATIONEN

PSI Kompakt WR Super Soft has been designed to reliably seal flexible corrugated, cable and installation protection pipe wall penetrations, against pressing and non-pressing water.

Specially designed double EPDM sealing elements allow for reliable sealing wall penetrations even with very thin-walled pipe types. With a total rubber width of 80 mm, the seal covers a particularly large part of the pipe surface, thus ensuring minimal surface pressure on the pipe.

PSI Kompakt Super Soft	
Pressure Plate Material	V2A / S304
Closed Version	standard
Split Version	on demand
Pressure Tight	1,0 bar
Rubber Thickness	2 x 40 mm
Rubber Material	EPDM
Color Sealing Element	black
Color Rubber Inlay	silicon blue
UV Resistance	good
Temperature Range	-30 °C bis +120° C
Shore Hardness, Shore A	35° +- 5

Core Drilling / Wall Sleeve ID	Pipe OD mm
100	36 - 46
100	46 - 56
100	55 - 65
150	69 - 78
150	85 - 94
150	98 - 110
200	108 - 115
200	119 - 128
200	150 - 160
250	156 - 165



ID = Inner Diameter, OD = Outer Diameter; Sizes in mm (all data without guarantee)
Split Version on request.

PLEASE NOTE:

- PSI kompakt seals are no fixing points or pipe supports.
- The carrier pipes must be centred and supported.
- To ensure a smooth, porous and capillary-free as well as a sealed surface of the core drilled hole a coating system should be used.
- For long clamping distances, hexagon socket wrench adapter extensions are required.

MAX. TORQUE:

Nuts M6 = 3 Nm / Nuts M8 = 5 Nm



PSI Products GmbH

Ulrichstrasse 25
72116 Mössingen / Germany

Phone: 0 049 (0)7473 3781 0
Fax: 0 049 (0)7473 3781 35
E-Mail: export@psi-products.de

www.psi-products.com