

PSI COMPAKT SEAL

**PRESSURE TIGHT
UP TO 5 BAR**

**SPECIAL VERSIONS FOR
DIFFERENT PIPE SYSTEMS**

**STAINLESS STEEL PRESSURE
PLATES AS STANDARD**

**ALL SPLIT VERSIONS OF
OUR STANDARD COMPAKT
SEALS ARE FOLDABLE**

**FHRK
QUALITY**



WWW.PSI-PRODUCTS.COM



GENERAL INFORMATION

Sealing with a system

The PSI Kompakt Seal is the perfect complement to the Original LINK-SEAL®. Ideal sealing for wall penetrations for gas, water and sewage pipes as well as for cables (taking into account the calculation bases and the on-site suitability of the product) against pressing and non-pressing water. Pressure plates are always made of stainless steel.

Principle

The 40 mm wide rubber element is compressed by means of two metal discs. PSI Kompakt seals the annular space between carrier pipe and casing pipe/core hole against water and gas.

Accessories

PVC, steel and asbestos-free fiber cement wall sleeves, rubber support rings with lip seals, Epoxy Resin for core hole coating.

Kompakt FW

For district heating pipe wall penetrations subject to an expected water pressure of greater 1 bar, we recommend using Kompakt FW, especially with pre-insulated or corrugated pipes.

Kompakt split (Folding version)

All split versions of PSI standard Kompakt seals are foldable now. For cases in which the pipe is already installed, the seal can be folded apart, placed around the pipe and pushed into the correct position.

FHRK - Seal of Quality

FHRK testing basis GE 101 Kompakt Seals (Test report no. G 30 322-6-1)

- Kompakt Standard
- Kompakt FW
- Kompakt WR
- Kompakt mit Großring
- Kompakt Multicable
- Kompakt Sonder
- Kompakt Varia
- Kompakt Blind



	Kompakt Standard	Kompakt Blind	Kompakt WR Super Soft	Kompakt FW for pre-insulated district heating pipes	Kompakt Standard with NBR rubber
Pressure plate material	S304 (V2A)	S304 (V2A)	S304 (V2A)	S304 (V2A)	S304 (V2A)
Closed version	Standard	Standard	Standard	Standard	Standard
Split version	available	-	upon request	upon request	available
Pressure-tightness	3,0 bar in secure position up to 5,0 bar	up to 1,5 bar	1,0 bar	3,0 bar in secure position up to 5,0 bar	3,0 bar in secure position up to 5,0 bar
Rubber thickness	40 mm	40 mm	2 x 40 mm	2 x 40 mm	40 mm
Radon barrier	yes	yes	yes	yes	no
Rubber material	EPDM	EPDM	EPDM	EPDM	NBR
UV-resistance	good	good	good	good	poor
Temperature range	-30 °C up to +120 °C	-30 °C up to +120 °C	-30 °C up to +120 °C	-30 °C up to +120 °C	-30 °C up to +70 °C
Hardness, shore A	43 ± 5°	43 ± 5°	35 ± 5°	43 ± 5°	40 ± 5°
Core drilled hole min./max	50 - 400 mm	50 - 400 mm	100 - 250 mm	125 - 400 mm	80 - 250 mm

The values specified for the pressure tightness are valid at 23 °C. For different, in particular higher permanent operating temperatures, it might be necessary to fit an ejection safety device.

SELECTION TABLE

Wall opening ID	Carrier pipe OD in mm		Rubber quality	
	mm	from	to	
50	6	12	x	
70	20	24	x	
70	24	32	x	
70	32	41	x	
80	20	28	x	x
80	32	40	x	x
80	48	50	x	
100	15	22	x	
100	20	28	x	x
100	25	32	x	x
100	32	40	x	x
100	36	44	x	x
100	46	56	x	x
100	55	65	x	x
119 (KG ND 125)	45	54	x	
119 (KG ND 125)	55	64	x	
119 (KG ND 125)	70	77	x	
125	55	64	x	x
125	61	70	x	x
125	70	78	x	x
150	46	54	x	
150	56	66	x	x
150	69	78	x	x
150	79	91	x	x
150	85	94	x	x
150	98	110	x	x
191 (KG ND 200)	106	115	x	
191 (KG ND 200)	117	126	x	
191 (KG ND 200)	132	141	x	

Wall opening ID	Carrier pipe OD in mm		Rubber quality	
	mm	from	to	
200	88	103	x	
200	108	115	x	
200	116	126	x	
200	119	128	x	
200	132	141	x	
200	135	144	x	
200	150	160	x	
250	135	144	x	x
250	140	149	x	
250	150	159	x	x
250	157	162	x	
250	156	165	x	x
250	165	175	x	x
250	174	181	x	x
250	178	187	x	x
250	197	202	x	x
250	204	210	x	x
300	178	187	x	
300	193	204	x	x
300	198	207	x	x
300	218	226	x	x
350	224	233	x	x
350	249	258	x	x
350	270	282	x	x
400	270	280	x	
400	279	288	x	x
400	304	313	x	
400	314	323	x	x
400	320	330	x	x

VARIA SEALS

General Information:

The use of PSI Kompakt Seal type Varia is flexible: as a temporary blind plug against non-pressing water or as a single lead-through for pressing water. The Sealing range of the Varia 1.5 for a core hole ID 100 mm is continuous from 18 mm - 65 mm because of the small steps (5 mm) per ring. The type Varia 1.0 for core drilled hole ID 100 mm is especially applicable for retrofitting service line wall penetrations. Varia ND 150 and ND 200 e.g. Seals a core drilled hole ID 150 mm and 200 mm and can be used for four different carrier pipe sizes. Due to the soft rubber quality the Seals are specifically suited for plastic pipes.

Kompakt Varia 1.5 ND 80:

The Kompakt Seal type Varia 1.5 ND 80 is made for a core drilled hole/wall sleeve ID 80 mm and can be used for carrier pipes or cables continuously from 18 up to 45 mm.

Kompakt Varia 1.5 ND 100:

The Kompakt Seal type Varia 1.5 ND 100 is made for a core drilled hole/wall sleeve ID 100 mm and can be used for carrier pipes or cables continuously from 18 up to 65 mm.

Kompakt Varia 1.0 ND 100: (split)

Varia 1.0 ND 100 is designed as a split version (partly also foldable) for a core drilled hole/wall sleeve ID 100 mm for retrofitting. It can be used for carrier pipe ODs 20 mm, 25 mm, 32 mm, 40 mm, 50 mm and 63 mm.

Kompakt Varia 1.5 ND 100 LWL :

The Kompakt Seal type Varia ND 100 is designed for a core drilled hole/wall sleeve ID 100 mm and can be used for carrier pipes as well as fiber optic cables up to OD 14 mm (The bore hole for the cable lead-through is placed in the pressure plate).

Kompakt Varia 1.5 ND 110:

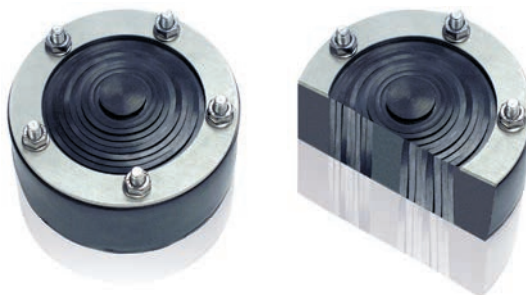
The Kompakt Seal type Varia 1.5 ND 110 can be used like type Varia 1.5 ND 100 but for a core drilled hole/wall sleeve ID 110 mm.

Kompakt Varia ND 150:

The Kompakt Seal type Varia ND 150 is made for a core drilled hole/wall sleeve ID 150 mm and can be used for carrier pipes OD 60.3-63 mm, 75-76.1 mm, 88.9-90 mm and 110 mm.

Kompakt Varia ND 200:

The Kompakt Seal type Varia ND 200 is made for a core drilled hole/wall sleeve ID 200 mm and can be used for carrier pipes OD 110 mm, 125 mm, 139.7-140 mm and 160 mm.



More content can be found on
www.psi-products.com



	Varia 1.5 ND 80	Varia 1.5		Varia 1.0 ND 100 split	Varia 1.5 ND 100 LWL	Varia ND 150	Varia ND 200
		ND 100	ND 110				
Pressure Plates	S304 (V2A) closed	S304 (V2A) closed		S304 (V2A) split	S304 (V2A) closed	S304 (V2A) closed	
Tightness as a blind plug	1,5 bar	1,5 bar	1,5 bar	1,0 bar	1,0 bar	against non-pressing water	
Tightness with carrier pipe						1,0 bar	
Thread size	M6	M6		M6	M6	M6	M8
Rubber thickness	40 mm	40 mm	40 mm	40 mm	40 mm	40 mm	
Radon barrier	yes	yes	yes	yes	yes	yes	
Rubber material	EPDM	EPDM	EPDM	EPDM	EPDM	EPDM	
UV-resistance	good	good	good	good	good	good	
Temperature range	-30 °C up to +120 °C	-30 °C up to +120 °C		-30 °C up to +120 °C	-30 °C up to +120 °C	-30 °C up to +120 °C	
Hardness, Shore A	43° ± 5°	43° ± 5°		43° ± 5°	43° ± 5°	43° ± 5°	
Carrier pipe dimensions	18 mm - 45 mm	18 mm - 65 mm		20 mm, 25 mm 32 mm, 40 mm 50 mm, 63 mm	32 mm, 40 mm, 50 mm, 2x LWL von 14 mm bis 7 mm	60-63 mm 75-76 mm 90 mm 110 mm	110 mm, 125 mm, 140 mm, 160 mm
Core drilled hole/wall sleeve	80 mm	100 mm 110 mm		100 mm	100 mm	150 mm	200 mm

The values specified for the pressure tightness are valid at 23 °C. For different, in particular higher permanent operating temperatures, it might be necessary to fit an ejection safety device.



PSI Products GmbH

Ulrichstrasse 25
72116 Mössingen / Germany

Phone: 0 049 (0)7473 3781 0

Fax: 0 049 (0)7473 3781 35

E-Mail: export@psi-products.de

www.psi-products.com